





VolkerWessels UK is a leading multidisciplinary contractor with a successful track record of delivering practical, innovative engineering solutions to the ports sector.





As part of VolkerWessels UK, one of the largest construction groups in Europe, we are able to draw on our considerable expertise across the wider industry to provide a full range of port infrastructure solutions, from single discipline to multi-disciplinary standalone projects and programmes of work.

The company employs around 3,000 staff across the country and brings together best practice through five business units.

Each business unit has a long and successful history of delivering quality and bespoke projects as well as providing specialist skills, plant and equipment. Collaboration enables us to share best practice and draw on the specialist skills of each business unit to deliver a truly integrated, multi-disciplinary service.

Our success in delivering highly engineered solutions in challenging environments ensures we regularly win repeat business with major clients, and secure long-term positions on high-profile frameworks.



-  **VolkerStevin**
-  **VolkerFitzpatrick**
-  **VolkerRail**
-  **VolkerHighways**
-  **VolkerLaser**

Our people, culture and values are the backbone of everything we do. We recruit, develop and retain exceptional people who share our core values and culture. Continual professional development means that many of our people are in the process of enhancing their skills, and 9% of our current workforce comprises apprentices, sponsored students or graduates on formal training schemes.

We believe that balancing sound risk management with engineering and operational delivery makes us stand out from the competition, protects us and our clients, and improves results.

Leading the port infrastructure sector for VolkerWessels UK is VolkerStevin and our teams have developed an excellent record of delivery across the ports sector.

At the Port of Dover for example, we have delivered major marine and landside infrastructure works as part of the Dover Western Docks Revival Project, which is the single biggest investment ever undertaken by the Port and represents the next stage of its evolution.

At Felixstowe, we have completed various phases of rail terminal and berth extension works to accommodate larger vessels and create additional container capacity, thereby allowing the port to increase container operations and optimise container handling between berths and its supporting yards. Our portfolio, however, is not restricted to

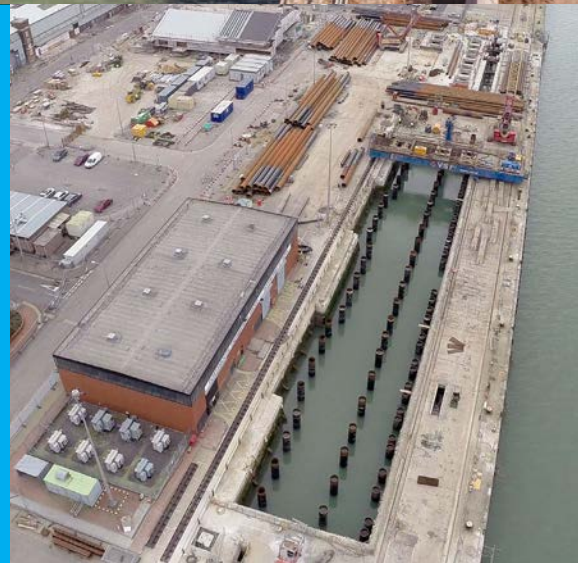
civilian ports and we also work closely with the Ministry of Defence and the Royal Navy, where we are constructing and renewing critical infrastructure that keeps the fleet in service.

Significant schemes include new base porting infrastructure at HMNB Portsmouth to allow the Royal Navy's two new aircraft carriers to berth safely, a RoRo facility on the Falkland Islands, and a new oil fuel depot jetty in Plymouth. We are also delivering a major programme of infrastructure enhancements at HMNB Clyde (Faslane and Coulport) as part of the Clyde Commercial Framework.





We are widely regarded as one of the UK's leading maritime civil engineering contractors with over 80 years of experience. We work in commercial ports and harbours, military naval bases and private industrial terminals all around the UK delivering some of the most technically and logistically challenging projects.



We provide a complete range of marine civils solutions from major new capital projects to smaller repair and refurbishment schemes. Our services include the design, construction and commissioning of jetties, quay walls and dolphins, marinas, breakwaters and lock gates.

As one of the UK's most prominent multi-disciplinary railway infrastructure contractors, our experience covers every aspect of permanent way maintenance and track construction. This includes design, plan, supply and installation works, which can be delivered either individually or as part of a fully integrated project.



Our RISQS approved rail teams, operating under our Principal Contractor License, deliver a range of projects including branch and spur lines, rail terminals, bridge and earthworks renewals and major design and build depot and station enhancements.





## Civil engineering and building

We have been providing a full range of civil engineering services to clients for almost a century. As a leading civil engineering contractor, we have an impressive record of delivering roads, bridges, culverts and structures on a wide range of upgrade, replacement and refurbishment schemes throughout the UK.

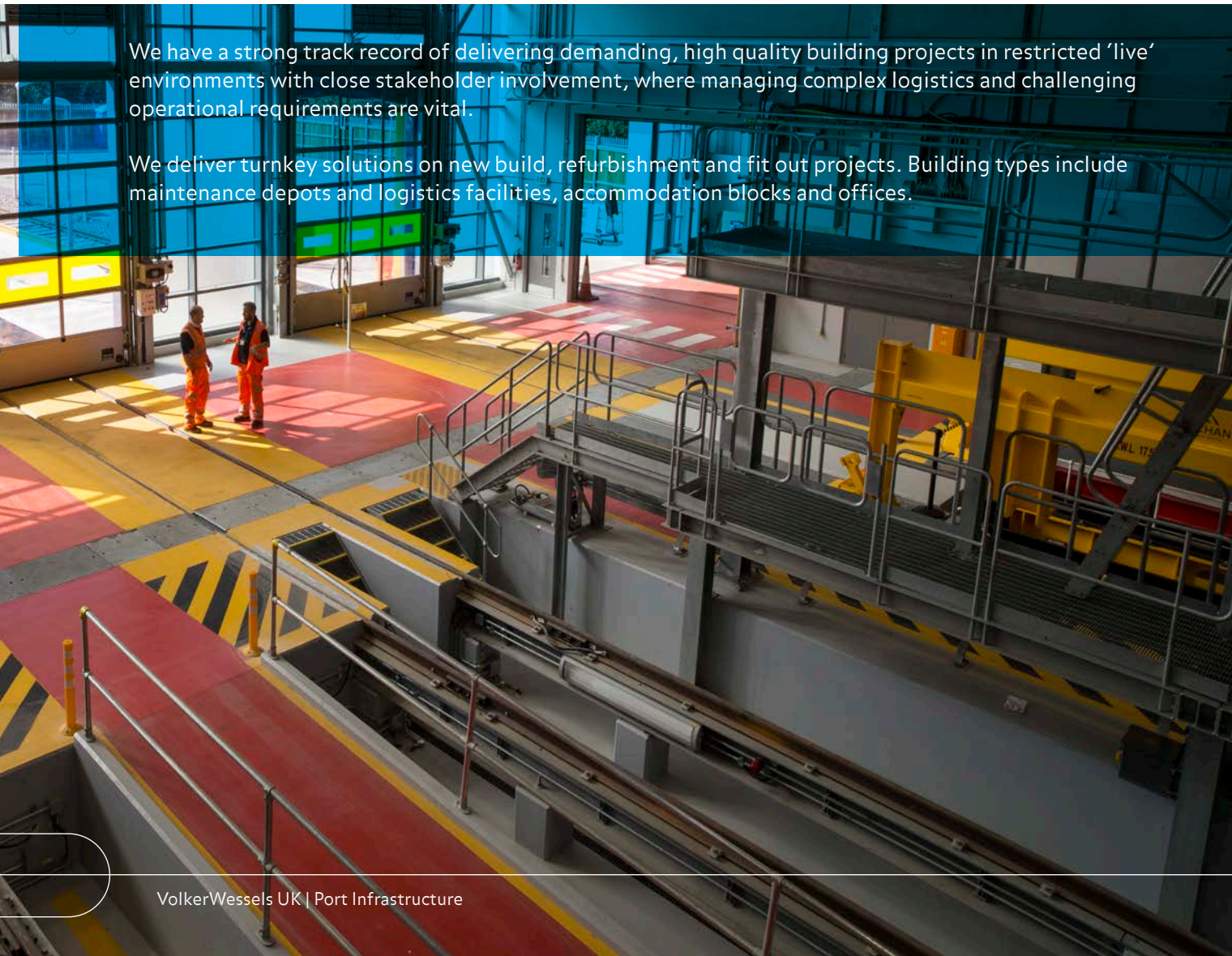
We work in collaboration with our clients, stakeholders and the supply chain throughout the project life cycle to combine planning, design and construction services into the most appropriate solution.

Our specialist internal capabilities also extend to the areas of concrete repairs, hydro-demolition, cathodic protection, waterproofing, jointing and other skilled works on bridge and highway structures.



We have a strong track record of delivering demanding, high quality building projects in restricted 'live' environments with close stakeholder involvement, where managing complex logistics and challenging operational requirements are vital.

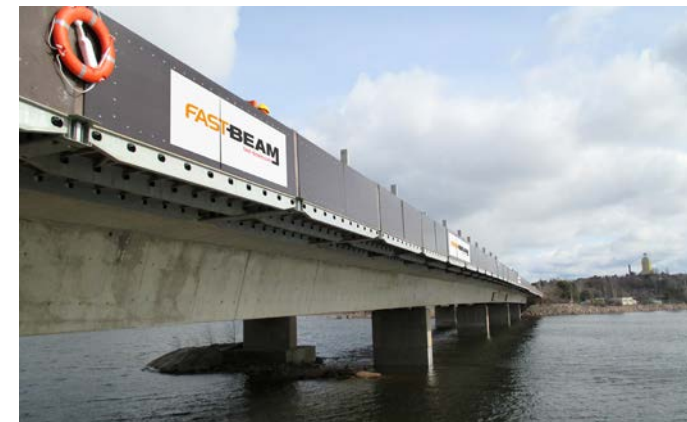
We deliver turnkey solutions on new build, refurbishment and fit out projects. Building types include maintenance depots and logistics facilities, accommodation blocks and offices.



## Repair, maintenance and access solutions

7

Our capability encompasses everything from refurbishment of existing assets to construction of new ones, including sheet piled walls. We offer a comprehensive structural strengthening and repair service to extend the life of marine assets, from inspection and surveys using our Dry Setting Installation (DSI) limpet cofferdam or Remote Operated Vehicles (ROVs), through to providing bespoke engineering solutions including cathodic protection, grit-blasting, steelwork repairs, coatings and impregnations. We are also market-leading experts in concrete repair and strengthening, for both structures and pavement.



We offer in-house access solutions for all types of structures, including our Fast Beam and V-Deck technologies which provide innovative means of quayside or underdeck access for repair/inspection of marine assets such as jetties, quay walls and lock gates. These technologies eliminate the need for traditionally complex and costly scaffolding.

Serving a broad range of sectors, we apply the same high standards whether we are delivering multi-million- pound maintenance and repair services or are engaged in minor works.





## Paving

Our concreting expertise goes back more than 70 years, when we began constructing wartime airfields across the UK. We continue to invest in the latest technology to ensure we keep ahead of the market and maintain our reputation as a leader in concrete paving.



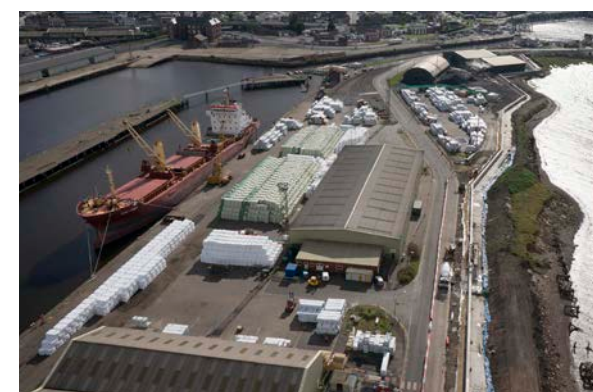
In the past 10 years we have laid more than two million metres squared of pavement quality concrete across the UK and Ireland. We were the first to introduce Leica stringless technology to the UK, and have continued to invest in pavement quality concrete designs working with BSAF to achieve F7 quality and strength.

We are also recognised as a specialist slipform concrete contractor, installing vehicle safety barriers, drainage channels and other slipform concrete infrastructure across various sectors throughout the UK.

Our portfolio also includes the delivery of bespoke perimeter security solutions, including those which serve as border control boundaries.



## Environmental and flood risk management



We design and construct new infrastructure, such as tidal barriers, piled flood walls and coastal defences, and maintain and improve some of the country's most critical flood defence assets.

We take on and overcome hugely challenging projects to bring back once derelict and unused prime development land into use, including the remediation and geotechnical enhancement of some of the most heavily polluted sites.





## Utilities and smart technology

Our experience encompasses installation of utilities infrastructure at port facilities including substations, cabling, pipelines and specialist MEICA equipment such as transformers, rotary frequency convertors and highly sophisticated ship-to-shore mechanical boom systems. We also provide a full turnkey civil engineering, mechanical, electrical and instrumentation service for both clean water and effluent treatment.



We are one of the leading pipeline and cabling specialists in the UK, offering in-house technical expertise in the areas of near-shore and land-based extra high voltage (EHV) cable and pipeline installations utilising a variety of methods, including horizontal directional drilling.

We are also at the forefront of ship-to-shore EHV energy supplies which provide an efficient means of powering vessels in port whilst improving air quality in the surrounding hinterland.

To enable ports to be 'smarter' and more digitally linked, they require upgrades to communications infrastructure, sensors, data platforms and analytical software. We are able to provide, install and maintain much of the physical infrastructure required for a Smart Port, including electric vehicle charging points, variable message signs, CCTV and central management systems.



## Supply chain management



We utilise our significant knowledge and experience across all key sectors of the industry to identify and integrate specialist design, manufacturing and construction suppliers within our team.



We build long-term relationships with suppliers to ensure we have the commitment of the most qualified individuals and first access to the most efficient plant and equipment as well as innovative techniques and products.



**For more information please contact:**

Eddie Tattersall, Business Development Director

■ 07803 263261

■ [edward.tattersall@volkerstevin.co.uk](mailto:edward.tattersall@volkerstevin.co.uk)

Paul Kelly, Head of Business Development

■ 07803 512547

■ [paul.kelly@volkerstevin.co.uk](mailto:paul.kelly@volkerstevin.co.uk)

