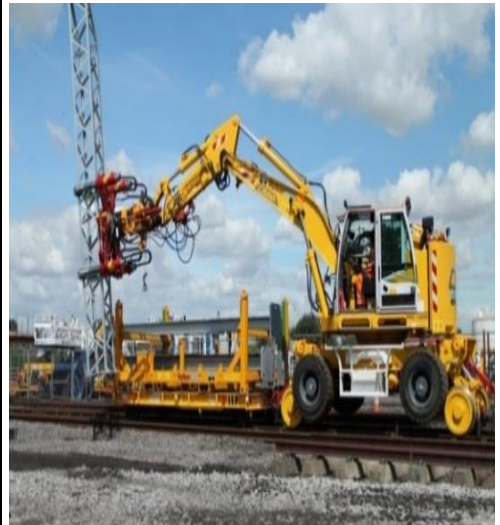


| | | | | | | | | | | |
|------|------|------|----|-----|----|----|----|----|----|-----------------|
| VF-B | VF-C | VF-R | VH | VR | VS | VB | VE | VL | VI | Shared Services |
| ✓ | ✓ | ✓ | ✓ | n/a | ✓ | ✓ | ✓ | ✓ | ✓ | n/a |

| RRV WHEELED EXCAVATOR |
|--|
| <ul style="list-style-type: none"> All Plant is to be inspected prior to first use, by completing the appropriate pre-start check sheet and daily / weekly recorded inspections thereafter Daily / weekly inspection records for site based plant are to be completed and held in the cab Operators must complete a full induction prior to starting work and evidence of having signed on to the appropriate RAMS / WPP / TBS for the task provided Sites must assess the suitability and selection of excavators for particular tasks and environments. A specific risk assessment must be completed prior to work commencing which can be detailed in the main works risk assessment. This must take account of the ground conditions, inclines on which they are to be used Any RRV for rail use must be procured from a POS licence holder. A POS Representative must be in attendance during works including on and off tracking An RRV must be under the control of a MC/CC supplied by the POS licence holder Where ALO is identified, controls as stipulated in COP0032 must be implemented e.g. Slew /height restrictors |



| MANDATORY | |
|---|--|
| Plant | Operator |
| <ul style="list-style-type: none"> Pre-use inspection signed off 12 month thorough examination Protected cab or FOPS cab structure where risk of falling objects Seat belts (retractable) must be fitted and operational Flashing amber beacon Mirrors / CCTV to provide 360° visibility Evidence of regular inspection plus "next service due" date Safe access for refuelling and maintenance Operators instructions must be available on the machine and operating control functions clearly marked All safety labels (decals) in place Locking caps / covers Isolation switch with key / locking doors with key where applicable Fire extinguisher in cab Reversing alarm to be fitted working and audible Cab free of un-necessary items Must be fully approved to RIS-1530-PLT for Network Rail and S1173 for London Underground rail infrastructures Direct wheel braking with Wheel nut indicators. Labelled each side with tyre inflation pressures Fire suppression system (London Underground) Annual brake test certificate In date Engineering Acceptance Certificate (EAC) or Engineering Certificate of Conformity (ECC) <p>Unless demonstrated that it will not be used for lifting:</p> <ul style="list-style-type: none"> 12 month and 6 Month thorough examination on lifting accessories Certified lifting point required for all lifting duties Safe Load Indicator or Rated Capacity Indicator | <ul style="list-style-type: none"> Shall be suitably trained and competent CPCS card - A58 - Excavator below 10 ton, A59 - Excavator above 10 ton, Category A Tracked, C Lifting Operations NPORS - Excavator category Have a valid sentinel card with OTP core competence and OTP machine operator excavator Depending on the attachments used (i.e., piling or lifting) the operator must hold the relevant Sentinel OTP attachment competence Competency assessment by site supervisor prior to being put to work - be familiar with machine Full site-defined PPE required - close fitting PPE required in all cases to avoid catching on controls Operator to be briefed on and to comply with VolkerWessels UK (VW UK) Pre-use, Daily and Weekly Defect Reporting System. Report defects and stop machine where defect is safety critical. Ensure machine is operated in accordance with manufactures instructions and in accordance with his / her training Be briefed on the site Plant and Vehicle Management procedures and check for overhead obstructions and hazards Shall stop work if any unauthorized / unsupervised personnel enter their immediate work area Arm to be placed on the ground and engine must be turned off if approached by others. Keys removed from the ignition before leaving the plant unattended for any reason Operator to mount and dismount machine using fixed access arrangements and always facing the machine Seat belt must be worn Shall report all unsafe conditions Do not break ground unless briefed on, received and fully understood a Permit to Dig |

| | | | | | |
|-------------------|-------------|-----------------|-------------|------------------|------------------------|
| Issue no.: | 2 | Date: | Oct 2020 | Parent document: | H09 Working with Plant |
| Approved for IMS: | IMS Manager | Document owner: | CR Director | Workspace file: | n/a |
| | | | | | Page 1 of 3 |

| | | | | | | | | | | |
|------|------|------|----|-----|----|----|-----|----|----|-----------------|
| VF-B | VF-C | VF-R | VH | VR | VS | VB | VGE | VL | VI | Shared Services |
| ✓ | ✓ | ✓ | ✓ | n/a | ✓ | ✓ | ✓ | ✓ | ✓ | n/a |

| MANDATORY (CONTINUED) | | | | | | | | | | |
|---|-------------|-------|----------|------------------|---|-----------------|-----|-------------|--|--|
| Plant (Continued) | | | | | Operator (Continued) | | | | | |
| <ul style="list-style-type: none"> When using a lifting eye, a swivel hook must be used to ensure load can be manoeuvred without risk of swinging back or overloading SWL to be clearly marked A specific lifting duty sheet, lift plan and risk assessment Check valves must be fitted to excavators boom and dipper circuits Rails must never be lifted using chains alone Rails greater in length than 20ft (6 metres) must not be lifted using a single point lift <p>If Quick hitch fitted:</p> <ul style="list-style-type: none"> Must comply with VW UK Group Safe Use of Quick Hitch Devices Must be automatic double locking Copy of Manufacturers Operating Instructions Pre-use inspection signed off <p>If used under overhead cables or obstruction or ALO:</p> <ul style="list-style-type: none"> Height and/or slew restrictors with indication on machine HSE GS6 "Avoidance of danger from overhead electric power lines" must be followed <p>Environmental</p> <ul style="list-style-type: none"> Engine must comply with the Stage IIIB European Emissions Standards and the NRMM Emissions Regulations in Central London and Canary Wharf | | | | | <ul style="list-style-type: none"> Operator to ensure that buckets are carried or stored safely at all times All hoses to be inspected regularly If used adjacent to live road traffic control measures must be put in place that in the event of operator error the machine will be prevented from striking passing traffic. e.g. Slew restrictors, Plant and Vehicle Marshal remote or track lock <p>If used for lifting:</p> <ul style="list-style-type: none"> Lift plan and / or Permit to Lift must be briefed and understood Operator shall be trained in how to use specific lifting attachments CPCS card category A58A (<10t) / A59A (>10t) to include "C" endorsement for Lifting Operations. If not CPCS then equivalent lifting operations training Operator must hold the relevant sentinel OTP core and attachment modules for lifting <p>If Quick hitch fitted:</p> <ul style="list-style-type: none"> Be briefed on "Safe Use of Quick Hitches" Operator shall be trained in how to use | | | | | |
| DESIRABLE | | | | | | | | | | |
| <ul style="list-style-type: none"> Proximity Warning System (PWS) Impose people exclusion area around plant and operation Have an in-cab warning alarm / sounder Zero Tail swing ballast / counterweight Use of slew restrictors where appropriate Seat belts must be interlocked with ignition switch Coloured seat belts or overband to improve visibility ROPS cab structure When used for lifting, a list of weights of potential items to be lifted should be maintained Tracker unit, isolation method independent of factory fitted locks, locking caps / covers to fuel and all other tanks Have external sounder warning of quick hitch operation Magenta light on plant identifying slew / height restrictor is operational and in use to identify ALO controls | | | | | | | | | | |
| RISKS | | | | | CONTROLS | | | | | |
| <ul style="list-style-type: none"> Danger of crushing in slew zone Overturning if lifting duties exceeded Consider risk of accessories - e.g. hammer / Noise Ground conditions and stability Clothes snagged on controls prior to release of servo isolator / safety handle Controls can be caught inadvertently if near to safety lever Effect of weather on visibility and working / traffic surfaces Overhead obstructions - cables; bridges Transportation including loading / unloading Poor visibility for operator of pedestrians Runaway risk on gradients | | | | | <ul style="list-style-type: none"> Safe and clean access into cab Safe and clean access for refuelling and maintenance No entry into exclusion zone unless signaled by operator after instruction from the MC/CC - Thumbs Up Dect-Com communications must be used for all rail operations between the Machine Operator and the MC/CC Use of CCTV or other proximity devices should be considered when planning activities COSHH assessment for fuels, oils and greases Operator to ensure buckets are carried and secured safely when stored, travelling or being transported Reversing alarm audible at 10m Plant and personnel segregation | | | | | |
| Issue no.: | 2 | Date: | Oct 2020 | Parent document: | H09 Working with Plant | | | | | |
| Approved for IMS: | IMS Manager | | | Document owner: | CR Director | Workspace file: | n/a | Page 2 of 3 | | |

| | | | | | | | | | | |
|-----------|-----------|-----------|---------|-----------|---------|---------|----------|---------|---------|------------------------|
| VF-B ✓ | VF-C ✓ | VF-R ✓ | VH ✓ | VR n/a | VS ✓ | VB ✓ | VGE ✓ | VL ✓ | VI ✓ | Shared Services n/a |
|-----------|-----------|-----------|---------|-----------|---------|---------|----------|---------|---------|------------------------|

| RISKS (CONTINUED) | CONTROLS (CONTINUED) |
|---|---|
| <ul style="list-style-type: none"> On and off tracking (ground conditions, RRAP and OLE) | <ul style="list-style-type: none"> Public interface (working alongside) - consider slew restrictors Underground services - Permit to Dig required All round visibility equipment fully operational <p>Access and egress from machines 3 points of contact and exit backwards</p> |

Note: All persons preparing risk assessments involving plant are encouraged to visit the proposed area of work and to review previous risk assessments undertaken for similar activities and safety alerts.

| | | | | | | | | | |
|--------------------------|-------------|--------------|----------|-------------------------|------------------------|------------------------|-----|-------------|--|
| Issue no.: | 2 | Date: | Oct 2020 | Parent document: | H09 Working with Plant | | | | |
| Approved for IMS: | IMS Manager | | | Document owner: | CR Director | Workspace file: | n/a | Page 3 of 3 | |