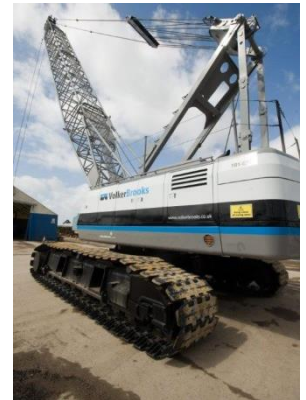


VF-B ✓	VF-C ✓	VF-R ✓	VH ✓	VR n/a	VS ✓	VB ✓	VGE ✓	VL ✓	VI ✓	Shared Services n/a
-----------	-----------	-----------	---------	-----------	---------	---------	----------	---------	---------	------------------------

CRAWLER CRANE

- All Plant is to be inspected prior to first use, by completing the appropriate pre-start check sheet and daily / weekly recorded inspections thereafter
- Daily / weekly inspection records for **site based** plant are to be completed and held in the cab
- Operators must complete a full induction prior to starting work and evidence of having signed on to the appropriate RAMS / WPP / TBS for the task provided
- Sites must assess the suitability and selection of cranes for particular tasks and environments. A specific lift plan and risk assessment must be completed prior to work commencing which can be detailed in the main works risk assessment
- Only Hydraulic cranes permitted, not mechanical



MANDATORY

Plant	Operator
<ul style="list-style-type: none"> • Pre-use crane documentation form signed off • Completed Operator Daily / Weekly Checklist • CE Certificate • Current 12 monthly LOLER thorough examination certificate • Current 6 monthly LOLER thorough examination certificate for all lifting tackle carried • Protected cab or FOPS cab structure where risk of falling objects • Flashing amber beacon • Mirrors / CCTV to provide 360° visibility • Evidence of regular inspection plus "next service due" date • Safe access for refuelling and maintenance • Operators instructions must be available on the machine and operating control functions clearly marked • All safety labels (decals) in place • Locking caps / covers • Isolation switch with key / locking doors with keys • Fire extinguisher in cab • Reversing alarm to be fitted working and audible • Slew alarms • Aircraft warning lights (if working within the vicinity of aerodromes) • Slew, jib height and radius restrictors if working in the vicinity of overhead power lines, railways, adjacent live traffic, etc. • Hook block over hoist cut-out facility • Boom hoist cut-out facility • Handrails fitted to running boards and crane upper structure • Load bearing hydraulic cylinders fitted with check valves • Rated Capacity Indicator (RCI) • Crane fitted with anemometer or other device to monitor in service wind speeds • All D/Bow Shackles used above 2 metres must be the Bolt Anchor Type (i.e. bolt, nut and pin) • Cab free of un-necessary items 	<ul style="list-style-type: none"> • Shall be suitably trained and competent • CPCS card with Category A02B • Valid medical certificate • Competency assessment by site supervisor prior to being put to work • Evidence of familiarisation training for type of crane to be operated • Full site-defined PPE required - close fitting PPE required in all cases to avoid catching on controls • Operator to be briefed on and to comply with VolkerWessels UK Pre-use, Daily and Weekly Defect Reporting System. Report defects and stop machine where defect is safety critical • Ensure machine is operated in accordance with manufactures instructions and in accordance with his / her training • Be briefed on the site Plant and Vehicle Management procedures and check for overhead obstructions and hazards • Shall stop work if any unauthorized / unsupervised personnel enter their immediate work area • Engine must be turned off if approached by others and keys removed from the ignition before leaving the plant unattended for any reason • Operator to mount and dismount machine using fixed access arrangements and always facing the machine • Shall report all unsafe conditions • Lifting plan and permit to lift in place as applicable

Issue no.:	1	Date:	Nov 2017	Parent document:	H09 Working with Plant					
Approved for IMS:	IMS Manager			Document owner:	CR Director	Workspace file:	n/a	Page 1 of 2		

VF-B ✓	VF-C ✓	VF-R ✓	VH ✓	VR n/a	VS ✓	VB ✓	VGE ✓	VL ✓	VI ✓	Shared Services n/a
-----------	-----------	-----------	---------	-----------	---------	---------	----------	---------	---------	------------------------

MANDATORY (CONTINUED)

Plant (Continued)

Man Riding Requirements:

- 6 Month thorough examination on lifting accessories and equipment / crane
- Carrier hoisting and lowering ropes minimum diameter of 8mm
- Hook fitted with safety catch
- Ability to restrict the working speed of all crane functions to 0.5m/s
- Control levers return to neutral automatically when released
- SWL of crane configuration in use is at least twice the rated capacity of the carrier
- Power lowering facility fitted to crane. If not, free-fall capability must be locked out
- Refer to BS7121 -1:2016 for further guidance

Environmental

- Engine must comply with the Stage IIIB European Emissions Standards and the NRMM Emissions Regulations in Central London and Canary Wharf

PROHIBITED

- Mechanical crawler cranes

DESIRABLE

- Jib Head camera if working on sites with blind lifting issues
- Counterweight mounted CCTV
- Block stand to be provided when reeving rope into hook block whilst block is lying down
- Window guards
- Audible / visual slew alarm
- All round vision system to avoid potential crushing incident
- Operator to have 3 years' operating experience
- Means for operator to monitor hoist rope tension, e.g. camera or mirror
- Red, amber and green high level illumination to indicate crane working within safe limits

RISKS	CONTROLS
<ul style="list-style-type: none"> • Danger of crushing in slew zone • Overturning if lifting duties exceeded, ground capable of withstanding imposed track loadings, underground services • Overhead obstructions - cables, bridges, power lines, telephone lines • Effect of weather on visibility and working / traffic surfaces • Potential excessive noise • Poor visibility for operators of pedestrians 	<ul style="list-style-type: none"> • Safe and clean access into cab • Safe and clean access for refuelling and maintenance • No entry into exclusion zone unless signalled by operator - Thumbs Up • Dropped loads - exclusion zone set up around the area of lifting operations, loads consisting of loose material / components to be containerized • Reversing alarm audible at 10m • Jib clash - coordination with adjacent cranes, tall plant • Public interface - working alongside - consider slew restrictors • All round visibility tools fully operational • Use of jib walkways to be avoided where practical • COSHH assessment for fuels, oils and greases

Note: All persons preparing risk assessments involving plant are encouraged to visit the proposed area of work and to review previous risk assessments undertaken for similar activities and safety alerts.

Issue no.:	1	Date:	Nov 2017	Parent document:	H09 Working with Plant
Approved for IMS:	IMS Manager	Document owner:	CR Director	Workspace file:	n/a
					Page 2 of 2